

Rhode Island Precipitation
National Weather Service Boston/Norton, MA
Preliminary Precipitation Data (inches) by Drought Region
Past 12 to 36 months ending October 2018
Includes CoCoRaHS Data

RI 1 month October 2018	Rainfall	Departure	Percent	Normal
Northwest	6.35	1.58	133	4.77
Northeast	6.53	1.88	140	4.65
Central West	6.72	2.27	151	4.45
Central East	6.47	2.54	165	3.93
Eastern	6.11	2.18	155	3.93
Southern	6.81	2.55	160	4.26
New Shoreham	6.96	2.70	163	4.26

RI 2 month Sep-Oct 18	Rainfall	Departure	Percent	Normal
Northwest	16.24	7.38	183	8.86
Northeast	15.48	6.89	180	8.59
Central West	16.49	8.06	196	8.43
Central East	15.72	7.87	200	7.85
Eastern	12.33	4.67	161	7.66
Southern	13.77	5.29	162	8.48
New Shoreham	11.69	3.21	138	8.48

RI 3 month Aug-Oct 18	Rainfall	Departure	Percent	Normal
Northwest	21.28	8.09	161	13.19
Northeast	20.27	7.55	159	12.72
Central West	22.33	9.88	179	12.45
Central East	21.40	9.95	187	11.45
Eastern	16.01	4.55	140	11.46
Southern	17.28	4.44	135	12.84
New Shoreham	14.30	1.46	111	12.84

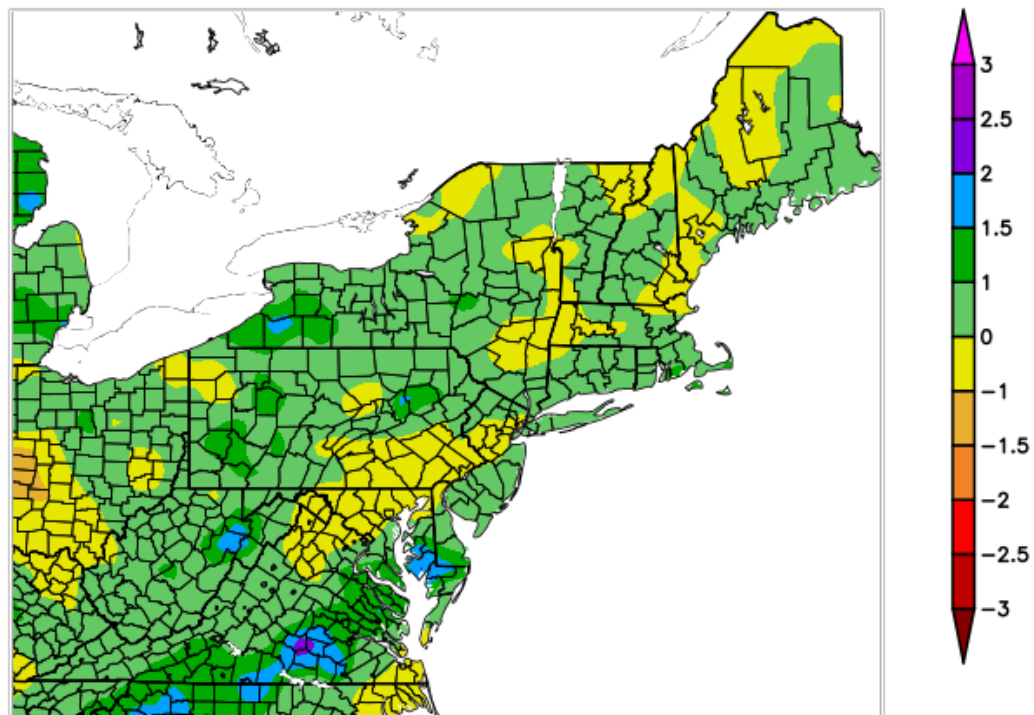
RI 6 month May-Oct 18	Rainfall	Departure	Percent	Normal
Northwest	31.46	5.95	123	25.51
Northeast	29.33	4.81	120	24.52
Central West	30.37	6.39	127	23.98
Central East	28.22	6.29	129	21.93
Eastern	21.56	-0.21	99	21.77
Southern	24.22	-0.51	98	24.73
New Shoreham	21.05	-3.68	85	24.73

RI 12 month Nov 17-Oct 18	Rainfall	Departure	Percent	Normal
Northwest	60.68	6.98	113	53.70
Northeast	57.76	6.34	112	51.42
Central West	59.51	8.74	117	50.77
Central East	56.49	9.31	120	47.18
Eastern	50.82	2.28	105	48.54
Southern	53.38	0.51	101	52.87
New Shoreham	48.58	-4.29	92	52.87

RI 24 month Nov 16-Oct 18	Rainfall	Departure	Percent	Normal
Northwest	114.32	6.92	106	107.40
Northeast	109.09	6.25	106	102.84
Central West	114.33	12.79	113	101.54
Central East	108.26	13.90	115	94.36
Eastern	96.81	-0.27	100	97.08
Southern	106.64	0.90	101	105.74
New Shoreham	96.06	-9.68	91	105.74

RI 36 month Nov 15-Oct 18	Rainfall	Departure	Percent	Normal
Northwest	163.48	2.38	101	161.10
Northeast	152.44	-1.82	99	154.26
Central West	161.38	9.07	106	152.31
Central East	150.83	9.29	107	141.54
Eastern	137.42	-8.20	94	145.62
Southern	151.70	-6.91	96	158.61
New Shoreham	141.01	-17.60	89	158.61

Monthly SPI 10/1/2018 – 10/31/2018

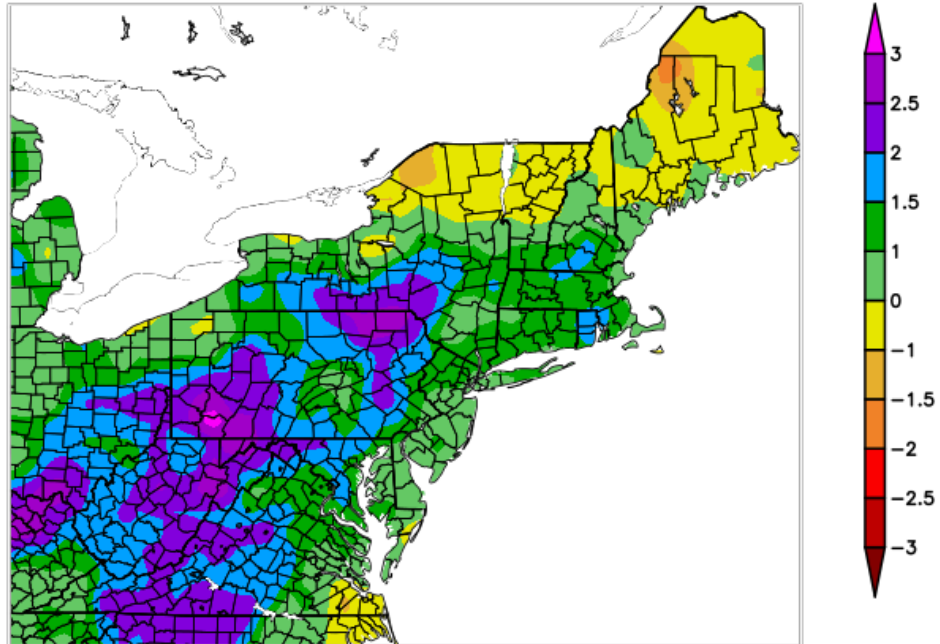


Generated 11/6/2018 at HPRCC using provisional data.

NOAA Regional Climate Centers

Map 1. 1 Month SPI for October 2018.

3-Month SPI 8/1/2018 – 10/31/2018

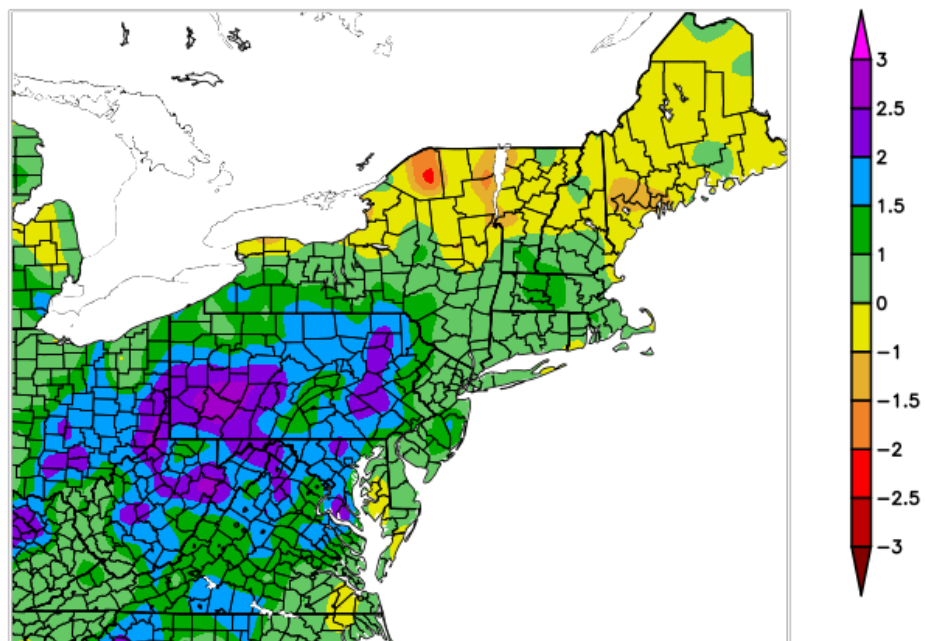


Generated 11/6/2018 at HPRCC using provisional data.

NOAA Regional Climate Centers

Map 2. Three-Month SPI ending October 2018.

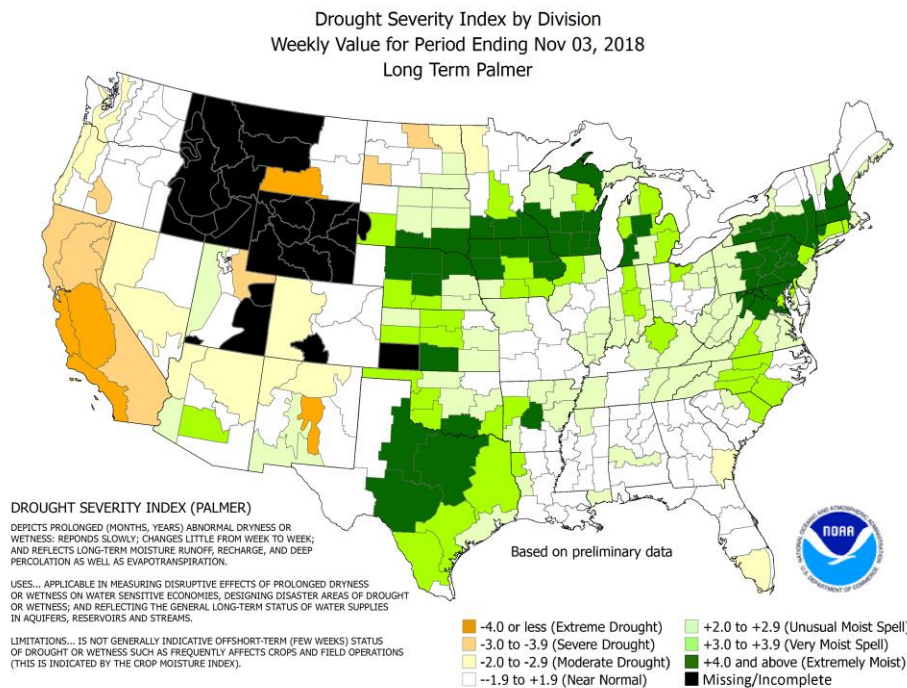
12-Month SPI 11/1/2017 – 10/31/2018



Generated 11/6/2018 at HPRCC using provisional data.

NOAA Regional Climate Centers

Map 3. Twelve month SPI ending October 2018.



Map 4. Palmer Drought Index from the Climate Prediction Center, NOAA, dated 11/3/18.
RI Palmer is in the Very Moist Spell range, +3.26.

U.S. Drought Monitor Rhode Island

October 30, 2018
(Released Thursday, Nov. 1, 2018)
Valid 8 a.m. EDT



Intensity:

- D0 Abnormally Dry
- D1 Moderate Drought
- D2 Severe Drought
- D3 Extreme Drought
- D4 Exceptional Drought

The Drought Monitor focuses on broad-scale conditions. Local conditions may vary. See accompanying text summary for forecast statements.

Author:

Deborah Bathke
National Drought Mitigation Center

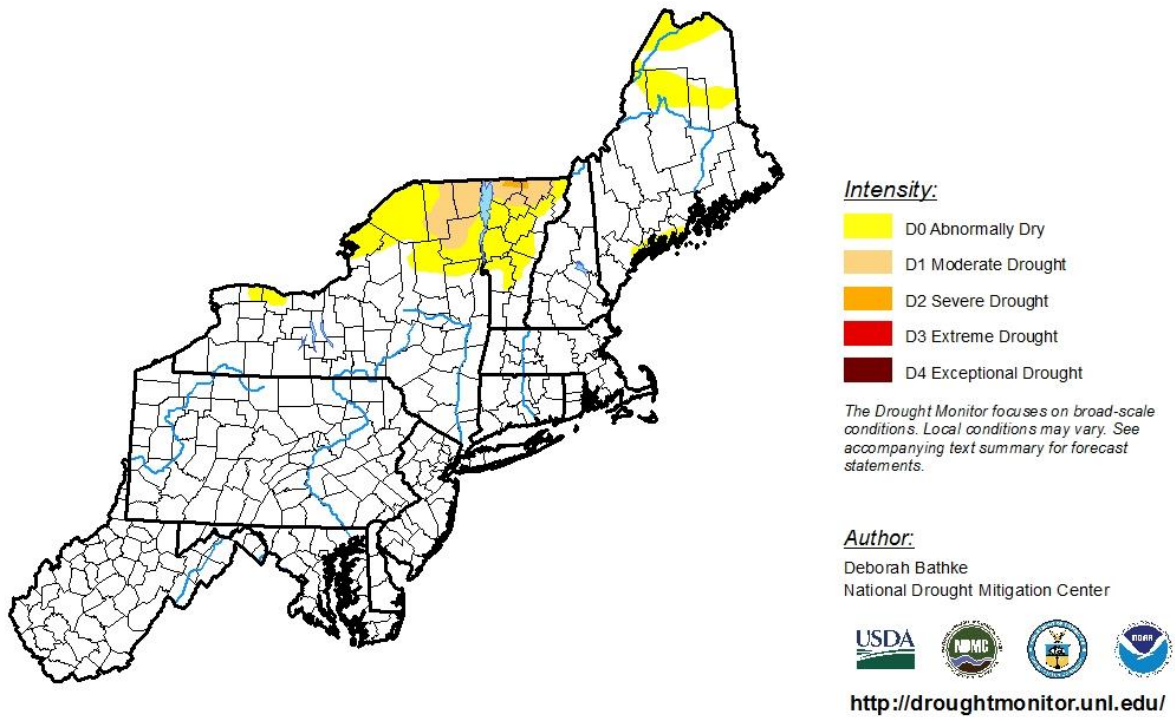


<http://droughtmonitor.unl.edu/>

Map 5. U.S. Drought Monitor zoom-in on Rhode Island, valid October 30, 2018.

U.S. Drought Monitor
Northeast

October 30, 2018
(Released Thursday, Nov. 1, 2018)
Valid 8 a.m. EDT



Map 6. US Drought Monitor for the Northeast U.S. valid October 30, 2018.