

Rhode Island Precipitation
National Weather Service Boston/Norton, MA
Preliminary Precipitation Data (inches) by Drought Region
Past 12 to 36 months ending August 2018
Includes CoCoRaHS Data

RI 1 month August 2018	Rainfall	Departure	Percent	Normal
Northwest	5.04	0.71	116	4.33
Northeast	4.79	0.66	116	4.13
Central West	5.84	1.82	145	4.02
Central East	5.68	2.08	158	3.60
Eastern	3.68	-0.12	97	3.80
Southern	3.42	-0.94	78	4.36
New Shoreham	2.61	-1.75	60	4.36

RI 2 month Jul-Aug 18	Rainfall	Departure	Percent	Normal
Northwest	9.18	1.03	113	8.15
Northeast	8.80	0.86	111	7.94
Central West	8.01	0.35	105	7.66
Central East	7.23	0.34	105	6.89
Eastern	4.71	-1.88	71	6.59
Southern	5.41	-2.61	67	8.02
New Shoreham	3.93	-4.09	49	8.02

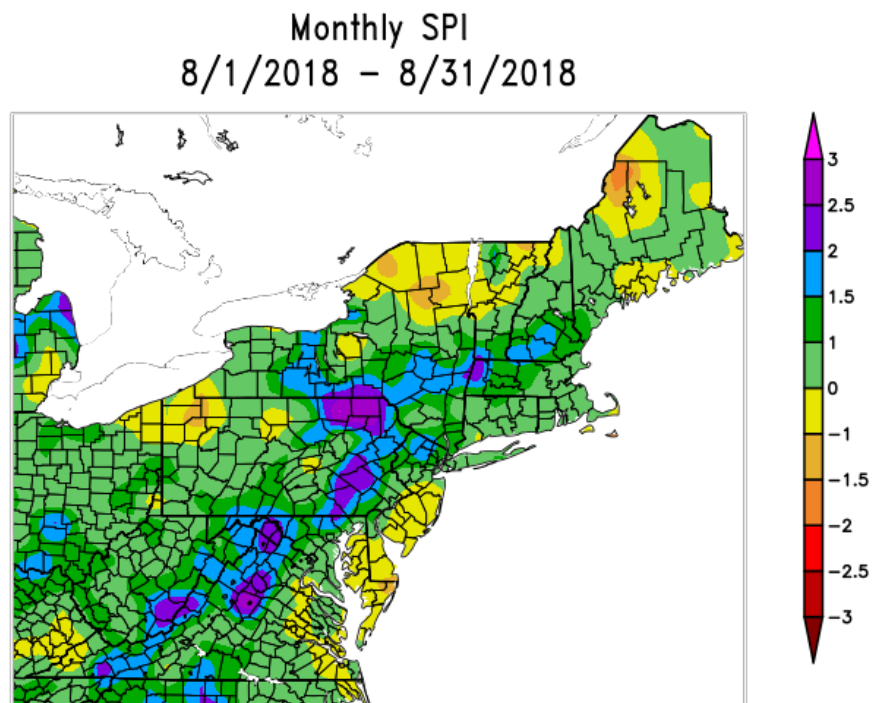
RI 3 month Jun-Aug 18	Rainfall	Departure	Percent	Normal
Northwest	12.76	0.03	100	12.73
Northeast	11.60	-0.55	95	12.15
Central West	11.59	-0.21	98	11.80
Central East	10.26	-0.27	97	10.53
Eastern	6.90	-3.57	66	10.47
Southern	7.83	-4.47	64	12.30
New Shoreham	7.16	-5.14	58	12.30

RI 6 month Mar-Aug 18	Rainfall	Departure	Percent	Normal
Northwest	27.65	0.85	103	26.80
Northeast	26.69	1.01	104	25.68
Central West	24.96	-0.35	99	25.31
Central East	23.76	0.31	101	23.45
Eastern	20.29	-4.32	82	24.61
Southern	20.75	-6.08	77	26.83
New Shoreham	19.64	-7.19	73	26.83

RI 12 month Sep17-Aug 18	Rainfall	Departure	Percent	Normal
Northwest	56.43	2.73	105	53.70
Northeast	51.93	0.51	101	51.42
Central West	54.35	3.58	107	50.77
Central East	49.60	2.42	105	47.18
Eastern	46.94	-1.60	97	48.54
Southern	50.35	-2.52	95	52.87
New Shoreham	45.72	-7.15	86	52.87

RI 24 month Sep 16-Aug 18	Rainfall	Departure	Percent	Normal
Northwest	108.57	1.17	101	107.40
Northeast	102.32	-0.52	99	102.84
Central West	107.87	6.33	106	101.54
Central East	99.99	5.63	106	94.36
Eastern	93.01	-4.07	96	97.08
Southern	102.79	-2.95	97	105.74
New Shoreham	94.96	-10.78	90	105.74

RI 36 month Sep 15-Aug 18	Rainfall	Departure	Percent	Normal
Northwest	155.00	-6.10	96	161.10
Northeast	144.19	-10.07	93	154.26
Central West	152.81	0.50	100	152.31
Central East	140.95	-0.59	100	141.54
Eastern	134.62	-11.00	92	145.62
Southern	146.19	-12.42	92	158.61
New Shoreham	138.24	-20.37	87	158.61

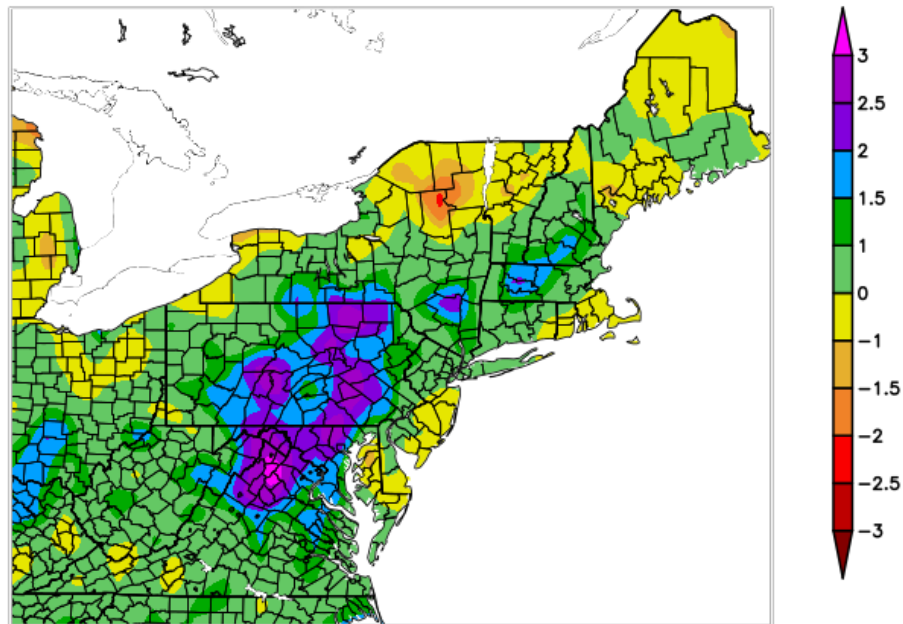


Generated 9/6/2018 at HPRCC using provisional data.

NOAA Regional Climate Centers

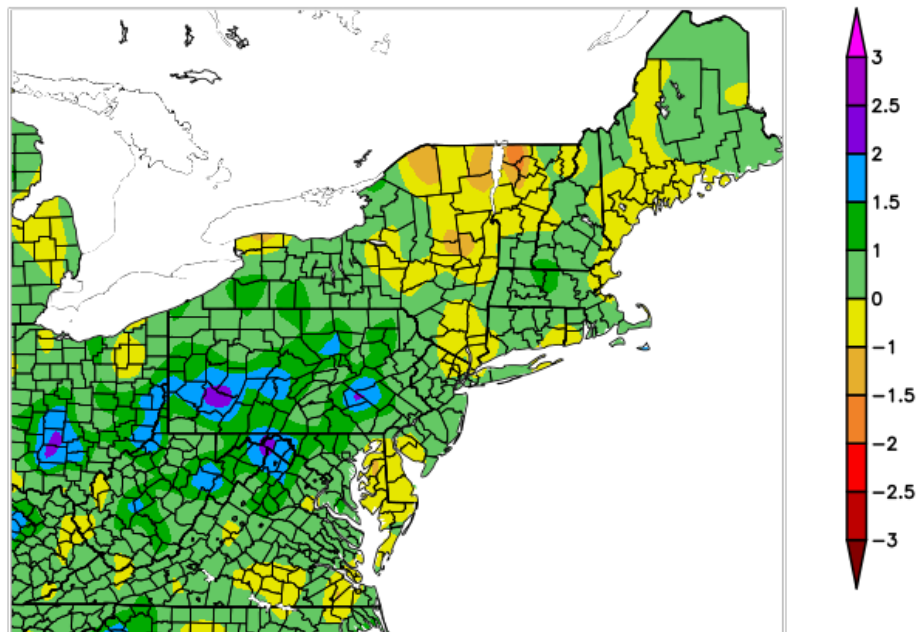
Map 1. 1 Month SPI for August 2018.

3-Month SPI 6/1/2018 – 8/31/2018

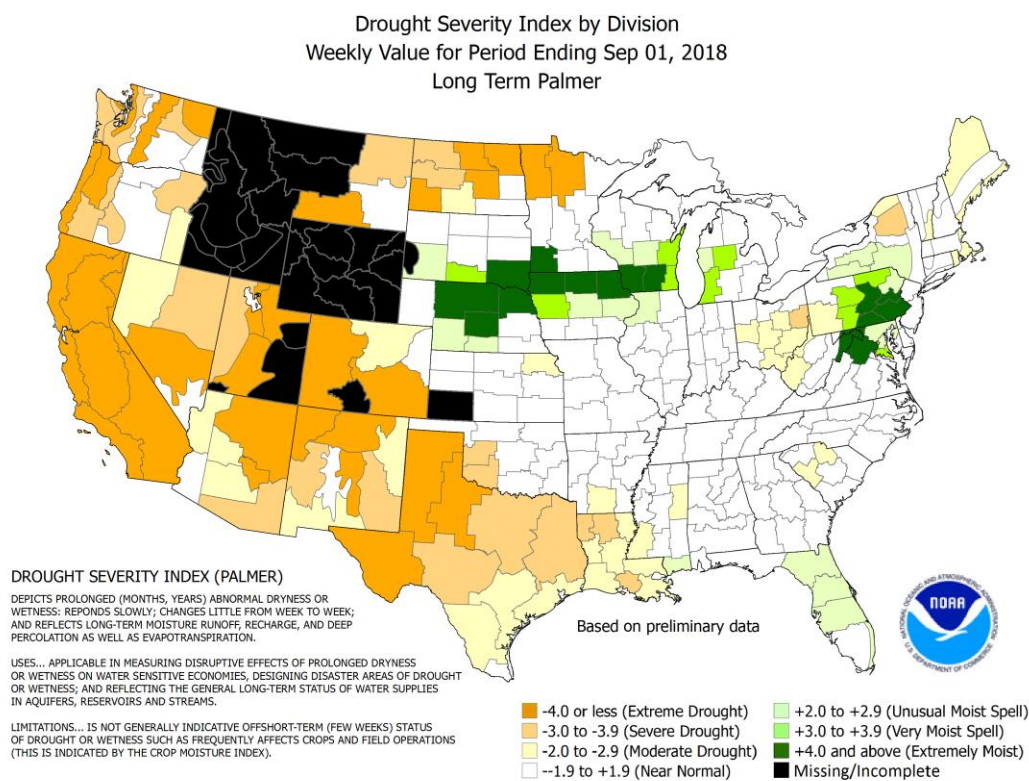


Generated 9/6/2018 at HPRCC using provisional data. NOAA Regional Climate Centers
Map 2. Three-Month SPI ending August 2018.

12-Month SPI 9/1/2017 – 8/31/2018



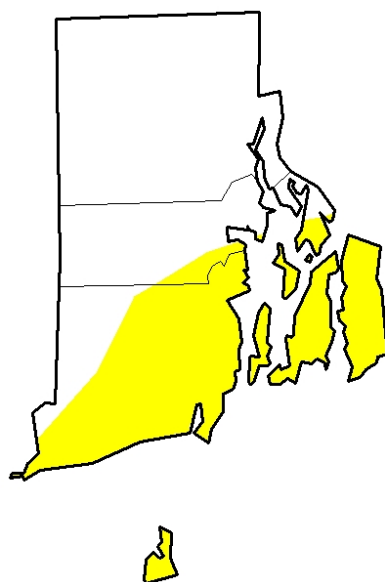
Generated 9/6/2018 at HPRCC using provisional data. NOAA Regional Climate Centers
Map 3. Twelve month SPI ending August 2018.



Map 4. Palmer Drought Index from the Climate Prediction Center, NOAA, dated September 1, 2018.
RI Palmer is in the Moderate Drought range, -2.00.

U.S. Drought Monitor Rhode Island

September 4, 2018
(Released Thursday, Sep. 6, 2018)
Valid 8 a.m. EDT



Intensity:

- D0 Abnormally Dry
- D1 Moderate Drought
- D2 Severe Drought
- D3 Extreme Drought
- D4 Exceptional Drought

The Drought Monitor focuses on broad-scale conditions. Local conditions may vary. See accompanying text summary for forecast statements.

Author:

David Miskus
NOAA/NWS/NCEP/CPC

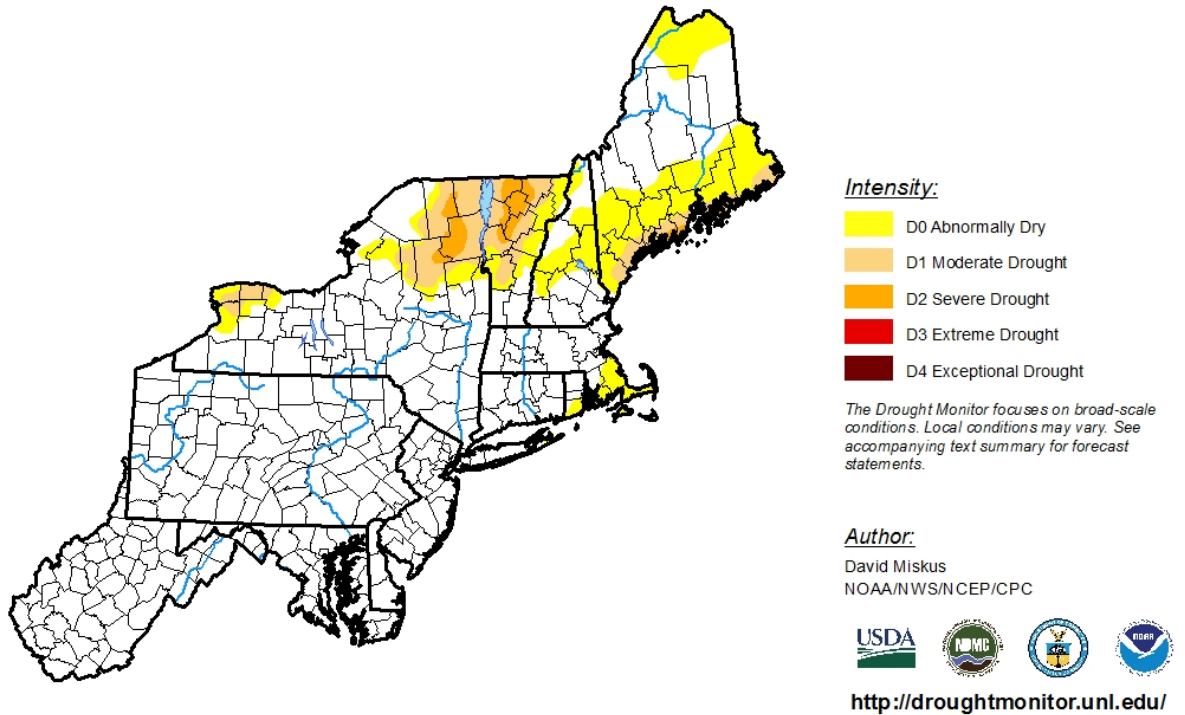


<http://droughtmonitor.unl.edu/>

Map 5. U.S. Drought Monitor zoom-in on Rhode Island, valid September 4, 2018.

U.S. Drought Monitor
Northeast

September 4, 2018
(Released Thursday, Sep. 6, 2018)
Valid 8 a.m. EDT



Map 6. US Drought Monitor for the Northeast U.S. valid September 4, 2018.