

**Rhode Island Precipitation**  
**National Weather Service Boston/Norton, MA**  
Preliminary Precipitation Data (inches) by Drought Region  
Past 12 to 36 months ending June 2018  
*Includes CoCoRaHS Data*

<b>RI 1 month June 2018</b>	<b>Rainfall</b>	<b>Departure</b>	<b>Percent</b>	<b>Normal</b>
Northwest	3.48	-1.10	76	4.58
Northeast	2.80	-1.41	67	4.21
Central West	3.58	-0.56	86	4.14
Central East	3.03	-0.61	83	3.64
Eastern	2.19	-1.69	56	3.88
Southern	2.42	-1.86	57	4.28
New Shoreham	3.23	-1.05	75	4.28

<b>RI 2 month May-Jun 18</b>	<b>Rainfall</b>	<b>Departure</b>	<b>Percent</b>	<b>Normal</b>
Northwest	5.94	-2.56	70	8.50
Northeast	5.05	-2.94	63	7.99
Central West	5.87	-2.02	74	7.89
Central East	5.27	-1.92	73	7.19
Eastern	4.52	-3.00	60	7.52
Southern	4.95	-3.28	60	8.23
New Shoreham	5.43	-2.80	66	8.23

<b>RI 3 month Apr-Jun 18</b>	<b>Rainfall</b>	<b>Departure</b>	<b>Percent</b>	<b>Normal</b>
Northwest	11.63	-1.57	88	13.20
Northeast	11.40	-1.32	90	12.72
Central West	11.28	-1.21	90	12.49
Central East	11.04	-0.51	96	11.55
Eastern	9.64	-2.70	78	12.34
Southern	9.57	-3.70	72	13.27
New Shoreham	9.38	-3.89	71	13.27

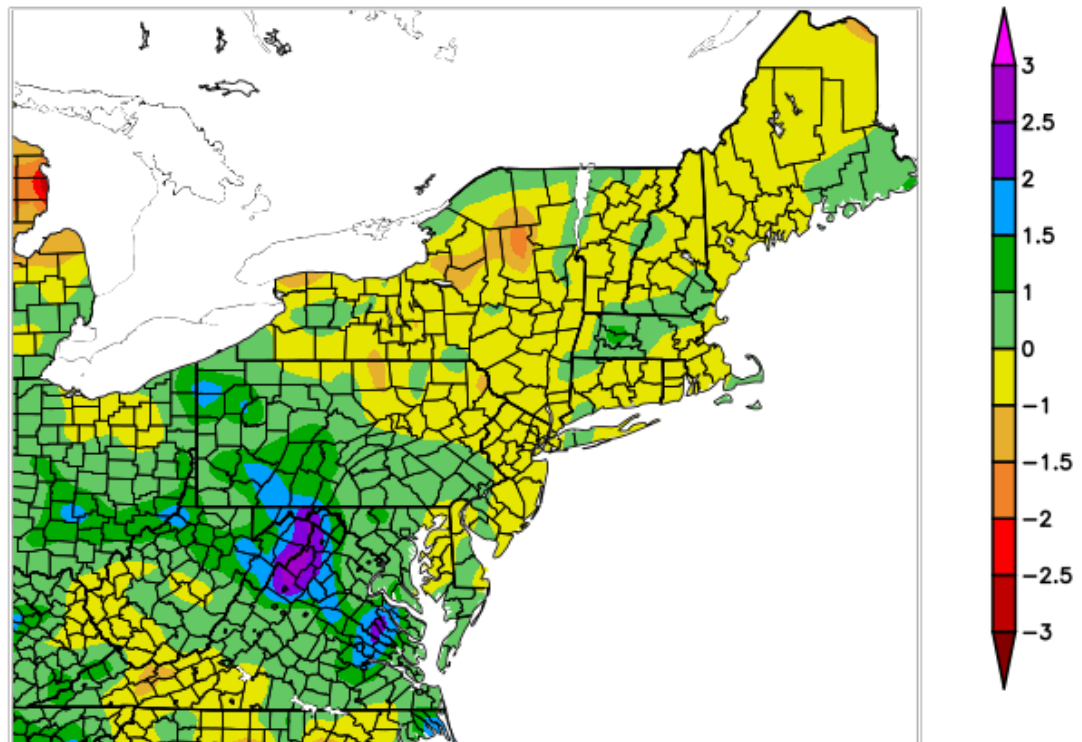
<b>RI 6 month Jan-Jun 18</b>	<b>Rainfall</b>	<b>Departure</b>	<b>Percent</b>	<b>Normal</b>
Northwest	29.06	2.17	108	26.89
Northeast	28.05	2.69	111	25.36
Central West	29.26	3.94	116	25.32
Central East	28.39	4.68	120	23.71
Eastern	27.76	2.12	108	25.64
Southern	28.20	1.59	106	26.61
New Shoreham	27.49	0.88	103	26.61

<b>RI 12 month Jul 17-Jun 18</b>	<b>Rainfall</b>	<b>Departure</b>	<b>Percent</b>	<b>Normal</b>
Northwest	53.52	-0.18	100	53.70
Northeast	48.81	-2.61	95	51.42
Central West	51.93	1.16	102	50.77
Central East	48.05	0.87	102	47.18
Eastern	47.32	-1.22	97	48.54
Southern	50.38	-2.49	95	52.87
New Shoreham	49.12	-3.75	93	52.87

RI 24 month Jul 16-Jun 18	Rainfall	Departure	Percent	Normal
Northwest	108.01	0.61	101	107.40
Northeast	99.59	-3.25	97	102.84
Central West	106.43	4.89	105	101.54
Central East	98.81	4.45	105	94.36
Eastern	91.75	-5.33	95	97.08
Southern	101.69	-4.05	96	105.74
New Shoreham	96.26	-9.48	91	105.74

RI 36 month Jul 15-Jun 18	Rainfall	Departure	Percent	Normal
Northwest	151.10	-10.00	94	161.10
Northeast	139.58	-14.68	90	154.26
Central West	150.41	-1.90	99	152.31
Central East	140.46	-1.08	99	141.54
Eastern	137.76	-7.86	95	145.62
Southern	146.03	-12.58	92	158.61
New Shoreham	140.15	-18.46	88	158.61

## Monthly SPI 6/1/2018 – 6/30/2018

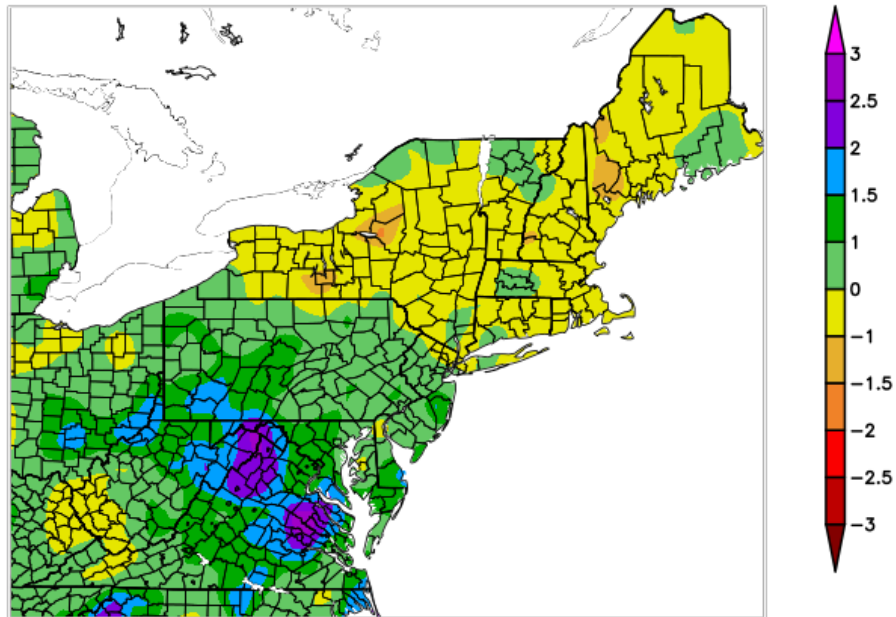


Generated 7/6/2018 at HPRCC using provisional data.

NOAA Regional Climate Centers

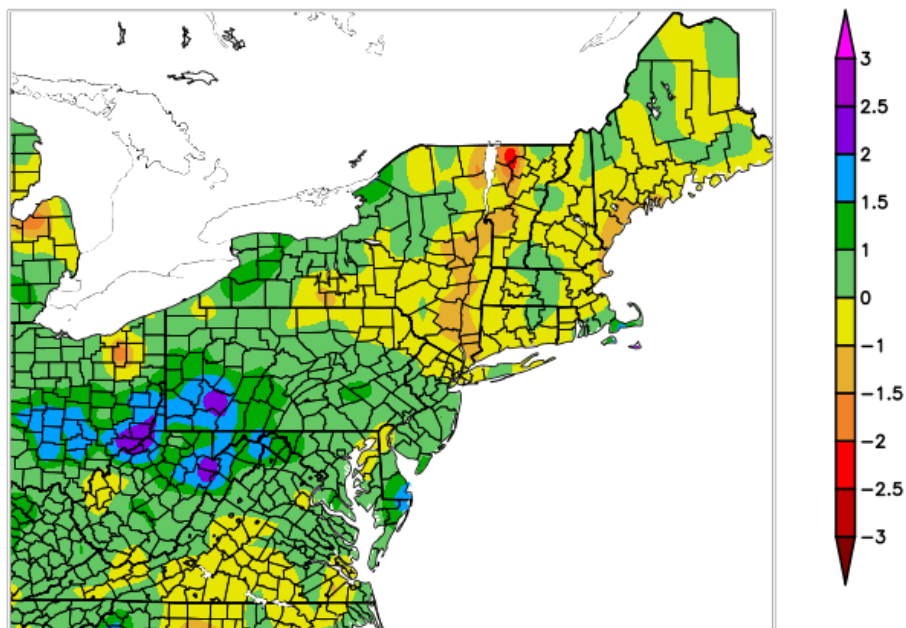
Map 1. 1 Month SPI for June 2018.

### 3-Month SPI 4/1/2018 – 6/30/2018

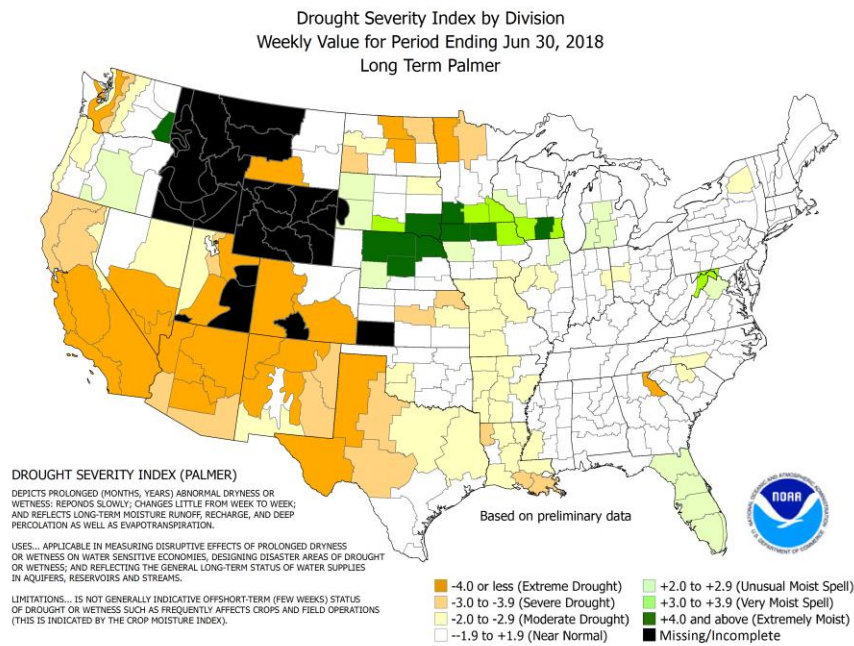


Generated 7/6/2018 at HPRCC using provisional data. NOAA Regional Climate Centers  
Map 2. Three-Month SPI ending June 2018.

### 12-Month SPI 7/1/2017 – 6/30/2018



Generated 7/6/2018 at HPRCC using provisional data. NOAA Regional Climate Centers  
Map 3. Twelve month SPI ending June 2018.



Map 4. Palmer Drought Index from the Climate Prediction Center, NOAA, dated June 30, 2018.  
**RI Palmer is in the Normal range, -0.94.**

## U.S. Drought Monitor Rhode Island

**July 3, 2018**  
(Released Thursday, Jul. 5, 2018)  
Valid 8 a.m. EDT



### Intensity:

- D0 Abnormally Dry
- D1 Moderate Drought
- D2 Severe Drought
- D3 Extreme Drought
- D4 Exceptional Drought

The Drought Monitor focuses on broad-scale conditions. Local conditions may vary. See accompanying text summary for forecast statements.

### Author:

Richard Tinker  
CPC/NOAA/NWS/NCEP

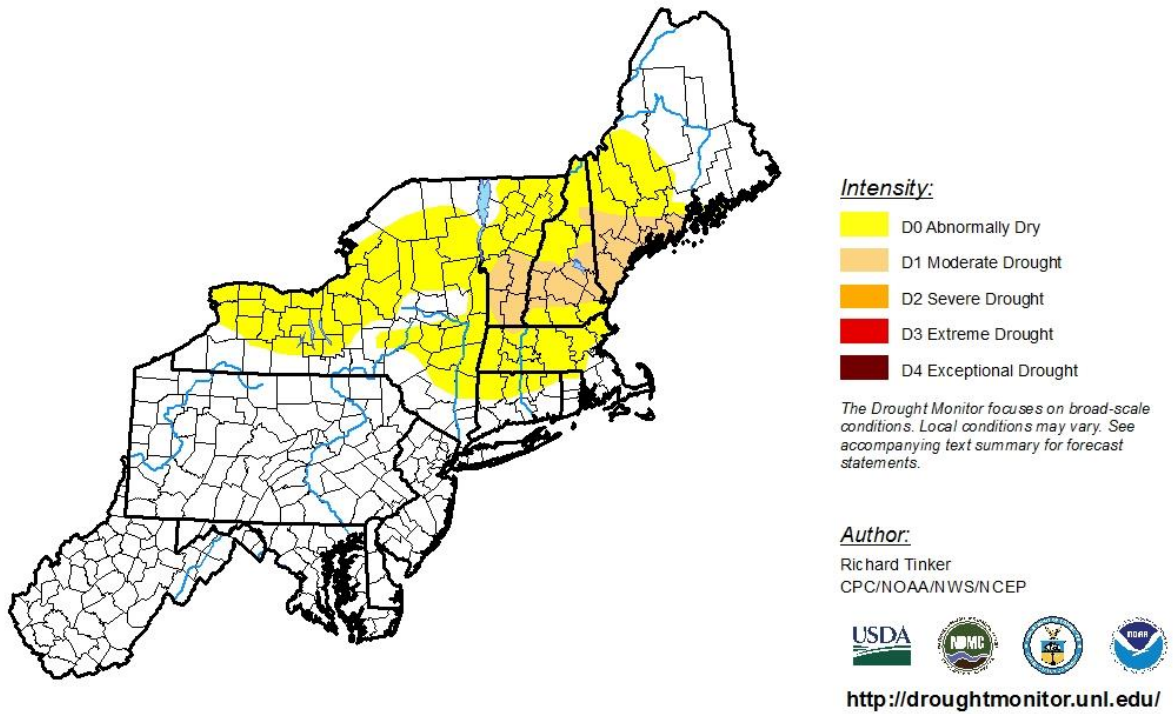


<http://droughtmonitor.unl.edu/>

Map 5. U.S. Drought Monitor zoom-in on Rhode Island, valid July 3, 2018.

**U.S. Drought Monitor**  
**Northeast**

**July 3, 2018**  
(Released Thursday, Jul. 5, 2018)  
Valid 8 a.m. EDT



Map 6. US Drought Monitor for the Northeast U.S. valid July 3, 2018.